

Investment Analyzer

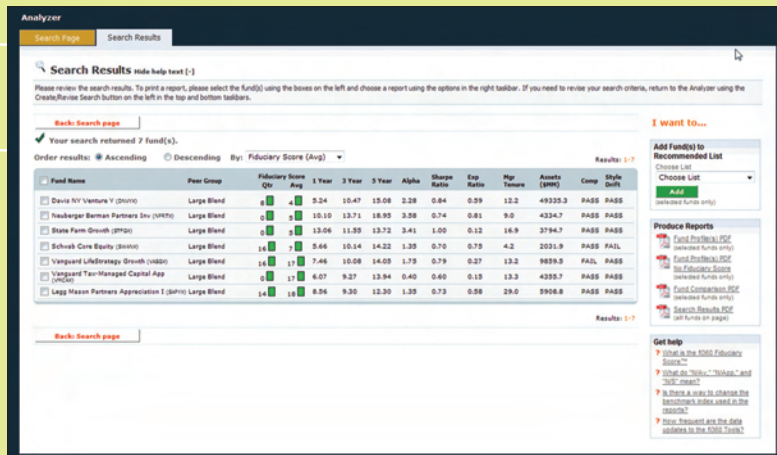
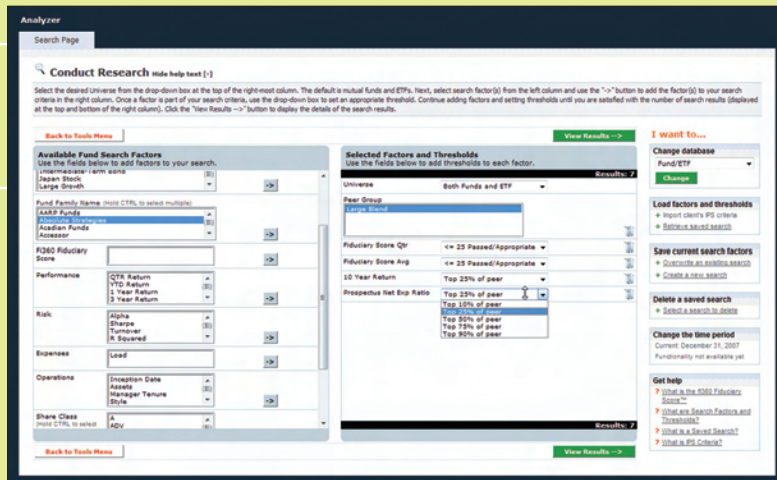
Numerous screening options, including the independent fi360 Fiduciary Score™

Multiple data universes available: Mutual Fund, ETF, Separate Account, and Variable Annuity Sub-account (data provided by Morningstar)

Search for best-in-class investments

Immediate, dynamic results

Confidently evaluate funds using a side-by-side comparison



Peer Group	Domestic Venture A				Global Growth				Global Core Equity			
	Value	Classification	Quintile Rank	# peers	Value	Classification	Quintile Rank	# peers	Value	Classification	Quintile Rank	# peers
fi360 Fiduciary Score™												
fi360 Fiduciary Score™ (Qtr)	6	Appropriate	1,368	0	6	Fair	1,368	16	16	Appropriate	1,368	1,368
fi360 Fiduciary Score™ (3 year avg)	4	Appropriate	1,368	5	Appropriate	1,368	7	Appropriate	1,368	Appropriate	1,368	1,368
fi360 Fiduciary Score™ Criteria	Value				Value				Value			
1) Inception Date	2/15/1989				5/1/1987				3/1/1986			
2) Total Assets	49,328.3 million				3,794.7 million				2,835.1 million			
3) Manager Tenure (Longest)	12.7 years				16.9 years				4.3 years			
4) Asset Allocation	86.54% allocation to US Equities				89.47% allocation to US Equities				86.46% allocation to US Equities			
5) Style DRIF	Style best matched the peer group				Style best matched the peer group				Style drifted to Large Value			
6) Prospective Net Expense Ratio	0.80%				0.12%				0.75%			
7) Alpha (3 year)	1.00%				3.41%				1.00%			
8) Sharpe Ratio (3 year)	0.81%				1.00%				0.70%			
9) 1-Year Total Return	-4.97%				13.88%				5.88%			
10) 3-Year Total Return	10.18%				11.00%				10.14%			
11) 5-Year Total Return	14.79%				13.77%				14.22%			

Legend
 ✓ Fund meets the criteria
 ✗ Fund does not meet the criteria
 N/A Fund is not screened on the criteria
 N/A* Fund does not have the history to be screened
 N/A** Fund data is not available.